

S.M. Services (UK) Ltd

18 Orchard Way, Cranfield, Beds. MK43 0HU. Tel 01234 751095

5 Cell Battery Backer & Dual Voltage Monitor

Specifications

Size.	68mm x 38mm x 20mm
Construction.	Boxes
Connections.	Via screw block connectors
Operating Voltage.	7.0v DC Max
Operating Current.	3.0 Amp per battery.
Voltage Drop.	0.6v + or - 10%
Monitor switch Point.	5.95v

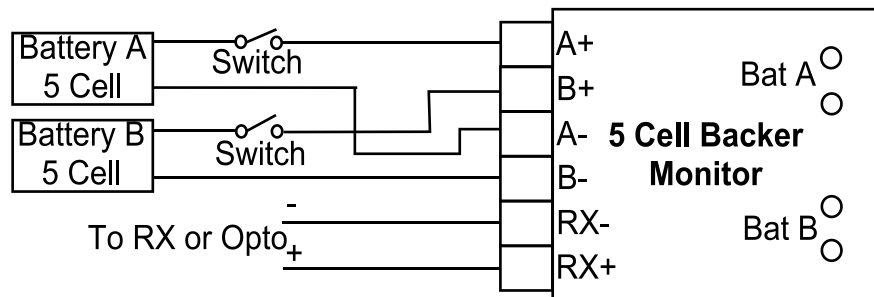
Description

The Battery Backer is designed to enable two 6.0v receiver battery packs to be connected in parallel to a single receiver.

When both batteries are operating normally they will discharge together, however if either battery fails the failed battery will automatically be blocked from discharging the remaining functional battery.

A dual voltage monitor is also incorporated to indicate when the minimum safe battery voltage has been reached or a battery has failed. The green to red led switching point is set to approximately 75% discharged. The Led's will flicker when the servo's are operated but should return to a steady state once servo movement stops, this is a normal function.

CHECK FOR GREEN LED'S PRIOR TO OPENING THROTTLE AT TAKE OFF



THIS UNIT IS FOR USE WITH 6 VOLT 5 CELL BATTERY PACKS ONLY

Please check that your equipment is capable of operating on a 5 cell battery backer
The unit requires the use of two switches which may be single pole as drawn or double pole.

Standard receiver wiring connections.

Lead function	Futaba	JR/New Sanwa	Hitec	Sanwa (old)
Positive = +	Red	Red	Red	3
Negative = -	Black	Brown	Brown	2
Signal	White	Orange	Yellow	1

Please refer to your equipment instructions for wiring codes if they are not listed.

WARNING

1. Do **NOT** reverse positive and negative wires. (Red and Black)
2. **ALWAYS** remove power from the unit before connecting or disconnecting any input or output connection, Failure to observe this instruction can damage both the unit or the equipment it is connected to.
3. **ALWAYS** range check when adding to or changing the control system of a model.
4. S.M. Services (UK) Ltd products are tested for use on the UK 35 Mhz aircraft frequency, use on other frequencies should not be a problem, however use on frequencies other than 35 Mhz is at the users risk.

If you have any questions or problems with this product please contact us, we are here to help you.

Your Guarantee

S.M. Services (UK) Ltd guarantee all products for 1 year from date of purchase. During this time S.M. Services (UK) Ltd will repair or replace all defective products free of charge, except for Units subject to fair wear and tear, or units that are subject to crash damage. To qualify for benefits under the guarantee you must have installed and used the product in accordance with S.M. Services (UK) Ltd instructions. Consequential losses and accidental damage to the product are not covered by the guarantee. S.M. Services (UK) Ltd cannot be held responsible for results of using our products for any purpose other than those described in the relevant instructions.

Returns

Any returned products ordered in error or are not required will if returned unopened in original product packaging within 28 days from date of purchase be subject to a full refund less shipping charges and a 5% handling charge. All other returns will be subject to a full refund less shipping charges and a 20% handling charge.